



Alcon A Novartis
Division

Product Guide

2018-2019



Welcome

Dear Customer,

As you know, Alcon® is committed to developing innovative and ground-breaking products that enhance people's vision, health, comfort and convenience. Our portfolio offers a complete line of contact lenses, contact lens care and dry eye management products, all produced to a high standard in our state-of-the-art facilities.

This product guide provides valuable information for your day-to-day patient care, but if there's anything you need to know that it doesn't cover, we're here to help. You can call us on **0371 376 0017 (UK) / 0818 946 621 (ROI)**. Or e-mail us at uk.easy@alcon.com

Thank you for your interest in our products and services.

Yours sincerely,

Dr. Ray Pasko
Business Unit Head

Our Brands

DAILIES TOTAL1®
WATER GRADIENT CONTACT LENSES

DAILIES®
AquaComfort PLUS®
Family of Contact Lenses

AIR OPTIX®
breathable contact lenses

AIR OPTIX® COLORS
breathable contact lenses

FRESHLOOK®
COLOR CONTACT LENSES

OPTI-FREE®
PRODUCTS

AO SEPT®
PLUS
HydraGlyde®
MOISTURE MATRIX

Systane®
Family of Products

Contents

Main Contacts

DAILIES TOTAL1® Contact Lenses

DAILIES TOTAL1® 6-7
DAILIES TOTAL1® Multifocal 8-9
10
11

DAILIES® Contact Lenses

DAILIES® AquaComfort PLUS® 14-15
DAILIES® AquaComfort PLUS® Toric 16
DAILIES® AquaComfort PLUS® Multifocal 17
Focus® DAILIES® All Day Comfort™ 18
19

AIR OPTIX® Contact Lenses

AIR OPTIX® plus HydraGlyde® 22-23
AIR OPTIX® plus HydraGlyde® for ASTIGMATISM[‡] 24
AIR OPTIX® plus HydraGlyde® MULTIFOCAL[‡] 25
AIR OPTIX® NIGHT & DAY® AQUA 26
AIR OPTIX® AQUA 27
AIR OPTIX® AQUA 28
AIR OPTIX® for ASTIGMATISM 29
AIR OPTIX® AQUA MULTIFOCAL 30

Beauty Contact Lenses

AIR OPTIX® COLORS 34-35
FreshLook® COLORBLENDS® 36
FreshLook® COLORS™ 38
FreshLook® DIMENSIONS™ 39
FreshLook® ONE-DAY® 39
DAILIES® FreshLook Illuminate™ 40
41

6-7

8-9

10

11

14-15

16

17

18

19

22-23

24

25

26

27

28

29

30

34-35

36

38

39

39

40

41

Contact Lens Care

OPTI-FREE® pureMoist® 44-45
OPTI-FREE® RepleniSH® 46
OPTI-FREE® Express® 47
AOSEPT® PLUS with HydraGlyde® 48
49

Systane®

Systane® BALANCE 52-53
Systane® ULTRA 54
Systane® GEL DROPS 55
Systane® LID WIPES 56
57

Fitting Guides & Power Grids

Multifocal Fitting Guidelines 60-61
DAILIES® AquaComfort PLUS® Toric Fitting Guidelines 62-63
AIR OPTIX® for ASTIGMATISM Fitting Guidelines 64-65
66-67

Alcon Tools, Education & Care

Alcon's Online Tools 70-71
Easy Online 72
Alcon's Training Services 73
The Academy for Eyecare Excellence™ 74
75

References

44-45

46

47

48

49

52-53

54

55

56

57

60-61

62-63

64-65

66-67

70-71

72

73

74

75

76-82

[‡]Coming late 2018.

Alcon® is committed to service excellence, providing you with multiple ordering options and points of contact for all your enquiries.

Customer Service Centre

(Including Returns and Technical Support)

UK Customer Service – Vision Care

0371 376 0017

IRELAND Customer Service – Vision Care

0818 946 621

uk.easy@alcon.com

Customer Service Centre Hours of Business

Monday to Thursday

9.00am to 5.30pm

Friday

9.30am to 5.00pm

Saturday

9.00am to 1.00pm

Alcon® offers a choice of ordering facilities, available 24 hours a day, 365 days a year for your ultimate convenience.

Online Ordering

www.uk.easy-myalcon.com

UK Fax

0371 351 1005

IRELAND Fax

0818 946 620

Patient Safety

If you would like to report an adverse event or product quality complaint please contact the Patient Safety Team.

0371 376 1402
gb.adr@alcon.com

Medical Information

For enquiries regarding product information, including technical enquiries and literature searches please contact Medical Information.

0345 266 9363
gb.medicaldepartment@alcon.com

Product and Campaign Materials

Please contact your Business Development Manager or the Customer Services Centre. Alternatively, please email the Brand Marketing Team.

uk.brand@alcon.com

Professional Affairs

For more information and assets to support you please visit myalcon.co.uk or contact the Professional Affairs Team.

www.myalcon.co.uk
alcon.professionalaaffairs@alcon.com

Alcon Eye Care UK Ltd, Park View, Riverside Way, Watchmoor Park, Camberley GU15 3YL



DAILIES TOTAL1®

WATER GRADIENT CONTACT LENSES

The award winning DAILIES TOTAL1® are the first and only water gradient contact lenses that offer patients exceptional all day comfort¹ and excellent breathability.^{2,9}



⁹Most breathable branded daily disposable lens Dk/t = 156 @ -3.00D.

DAILIES TOTAL1®



THE SCIENCE

DAILIES TOTAL1® is the first water gradient contact lens featuring a 33% to 80% increase in water content from core to surface.^{3,4,†}



THE BENEFIT

Offers patients exceptional comfort¹ – 9 out of 10 subjects in a clinical study agreed that DAILIES TOTAL1® are so comfortable that they feel like they are wearing nothing.⁵



PERFECT FOR

Patients who want comfortable contact lenses from the moment they wake up until when they go to bed.¹ They want the best and refuse to compromise.



THE SCIENCE

DAILIES TOTAL1® Multifocal features a Precision Profile™ lens design for a smooth progression of power gradients.⁶ SmarTears™ helps stabilise the tear film to provide continuous moisture throughout the day and help to restore the lipid layer where needed.⁷



THE BENEFIT

Offering patients seamless vision at all distances and exceptional comfort from the beginning to the end of the day.¹ This easy-to-fit lens has a 96% first fit success rate.⁸



PERFECT FOR

The specific vision needs of people affected by presbyopia who want quality without compromising.

[†]In vitro measurement of unworn lenses.



	DAILIES TOTAL1®	DAILIES TOTAL1® Multifocal
Material	delefilcon A	delefilcon A
Water content (%)	Core Water Content (%) 33%; Surface Water Content (%) > 80%	Core Water Content (%) 33%; Surface Water Content (%) > 80%
Dk/t	156 @ -3.00D	156 @ -3.00D
TC (mm)	0.09	0.09
TD (mm)	14.1	14.1
BOZR (mm)	8.5	8.5
Power range (steps)	+0.50 to +6.00 (0.25D); -0.50 to -6.00 (0.25D); -6.50 to -12.00 (0.50D)	+6.00 to -10.00 (0.25DS)
ADD (steps)	–	LO (<+1.25), MED (+1.50 to +2.00), HI (+2.25 and above)
Handling tint	Yes	Yes
Lenses per box	30 and 90	30 and 90
Replace frequency	1/7	1/7
Design	Front surface: Aspheric; Back surface: Spherical	Precision Profile™ Design Front surface: Aspheric; Back surface: Spherical



DAILIES®

Offering clear vision and refreshing comfort with every blink,⁹ DAILIES® actively release moisture all day long,¹⁰ making them the perfect fit for part-time or full-time wear.



DAILIES® AquaComfort PLUS®



THE SCIENCE

Contains 3 moisturising agents including HPMC¹¹ for instant comfort upon application, PEG and PVA blink-activated moisture for comfort throughout the day.^{10,12}



THE BENEFIT

Clear vision and refreshing comfort⁹ with blink-activated moisture all day long.¹⁰



PERFECT FOR

New daily contact lens wearers seeking advanced comfort⁹ each and every day.

DAILIES® AquaComfort PLUS® Toric



THE SCIENCE

The Precision Curve™ lens design provides outstanding stability and crisp, clear vision¹³ with blink-activated moisture.⁹



THE BENEFIT

The design works with the natural blinking action of the eyelids to keep the lens balanced, providing consistent, crisp and clear vision.¹³



PERFECT FOR

New daily contact lens wearers seeking crisp vision with refreshing comfort throughout the day.^{9,10}

DAILIES® AquaComfort PLUS® Multifocal



THE SCIENCE

Precision Profile™ lens design for crisp clear vision at all distances¹⁴ with blink-activated moisture.



THE BENEFIT

Seamless vision from near to far¹⁴ and refreshing comfort all day.^{9,10}



PERFECT FOR

Providing satisfaction to patients through different stages of their presbyopia.

Focus® DAILIES® All Day Comfort™



THE SCIENCE

The first lens with PVA moisture release technology to offer patients blink-activated, sustained moisturise release.¹²



THE BENEFIT

Continuous lubrication for improved end-of-day comfort.¹⁰



PERFECT FOR

Patients seeking cost effective contact lenses which leave eyes refreshed and revitalised.⁹



	DAILIES® AquaComfort PLUS®	DAILIES® AquaComfort PLUS® Toric
Material	nelfilcon A (with HPMC, PEG and dual molecular weight PVA)	nelfilcon A (with HPMC, PEG and dual molecular weight PVA)
Water content (%)	69	69
Dk/t	26 @ -3.00D	26 @ -3.00D
TC (mm)	0.10	0.10
TD (mm)	14.0	14.4
BOZR (mm)	8.7	8.8
Power range (steps)	+0.50 to +6.00 (0.25D); +6.50 to +8.00 (0.50D) -0.50 to -6.00 (0.25D); -6.50 to -15.00 (0.50D)	+4.00 to -6.00 (0.25D); -6.50 to -8.00 (0.50D)
Cyl	–	-0.75, -1.25, -1.75
Axes (degrees)	–	10, 20, 70, 80, 90, 100, 110, 160, 170, 180
Add (steps)	–	–
Handling tint	Yes	Yes
Lenses per box	10, 30, 90 and 180	30 and 90
Replace frequency	1/7	1/7
Design	Front surface: Tri-curve; Back surface: Tri-curve	Dual Thin Zone Design. Front surface: Spherical Lenticular; Back surface: Toric



DAILIES® AquaComfort PLUS® Multifocal	Focus® DAILIES® All Day Comfort™
nelfilcon A (with HPMC, PEG and dual molecular weight PVA)	nelfilcon A (with added PVA)
69	69
26 @ -3.00D	26 @ -3.00D
0.10	0.10
14.0	13.8
8.7	8.6
+6.00 to -10.00 (0.25DS)	+0.50 to +6.00 (0.25); -0.50 to -6.00 (0.25D); -6.50 to -10.00 (0.50D)
–	–
–	–
LO (<+1.25), MED (+1.50 to +2.00), HI (+2.25 and over)	–
Yes	Yes
30 and 90	30 and 90
1/7	1/7
Precision Profile™ lens design. Front surface: Aspheric; Back surface: Spherical	Front surface: Tri-curve; Back surface: Tri-curve



AIR OPTIX[®]*

contact lenses

Designed for consistent comfort all day,¹⁵ every day, AIR OPTIX[®] harness innovative SmartShield™ Technology that creates an ultra-thin protective layer to guard lenses from deposits^{16,17} – keeping them cleaner for longer.¹⁷



AIR OPTIX® plus HydraGlyde®



THE SCIENCE

Enveloped in HydraGlyde® Moisture Matrix for longer lasting moisture benefits and improved wettability.¹⁸ Superior lipid deposit resistance with SmartShield™ Technology.¹⁶ This lens is designed for consistent comfort from day 1 to day 30.^{19,20}



THE BENEFIT

Outperforms leading competitors with improved patient comfort due to longer-lasting wettability.^{15,21*}



PERFECT FOR

Patients seeking a monthly contact lens that feels clean, comfortable and hydrated all month long.^{19,20}

AIR OPTIX® plus HydraGlyde® for ASTIGMATISM



THE SCIENCE

Enveloped in HydraGlyde® Moisture Matrix for longer lasting moisture benefits and improved wettability.^{18,*} Outstanding stability and fit success with unique Precision Balance 8|4™ design.²¹



THE BENEFIT

HydraGlyde® Moisture Matrix lenses stay clean and comfortable for the whole wearing cycle and feel more hydrated at the end of the day.^{19,20} Less than 5° of oscillation with each blink ensures reliable, consistent visual acuity.^{21,**}



PERFECT FOR

Patients seeking excellent visual acuity and consistent vision from day 1 to day 30.^{15,20,**}

*Based on AIR OPTIX AQUA. **Based on AIR OPTIX for ASTIGMATISM

AIR OPTIX® plus HydraGlyde® MULTIFOCAL



THE SCIENCE

Smooth progression of power from centre-near to intermediate and distance with Precision Profile™ lens design for crisp, clear vision at all distances.^{14,***} Also features HydraGlyde® Moisture Matrix, an innovative, proprietary reconditioning agent that embeds in the contact lens.



THE BENEFIT

HydraGlyde® Moisture Matrix keeps contact lenses clean and comfortable for the whole wearing cycle and feeling more hydrated at the end of the day.^{19,20}



PERFECT FOR

Emerging and established presbyopes who seek crisp, clear vision at all distances near through far.^{14,***}

***Based on AIR OPTIX AQUA MULTIFOCAL.

AIR OPTIX® NIGHT & DAY® AQUA



THE SCIENCE

Highest level of oxygen transmissibility of any available soft contact lens.²³ Approved for up to 30 nights continuous wear.²³ SmartShield™ Technology provides clean and consistently comfortable vision from day 1 to day 30.^{19,23,‡}



THE BENEFIT

High breathability ensures maximum oxygen transmission and takes into account that no two corneas respond alike.²³ Ultra-smooth lens surface designed to defend against daily deposits for comfortable wear all day long.^{16,17}



PERFECT FOR

The most breathable soft contact lens for patients who lead busy lives, and nap or sleep in their contact lenses.^{23,‡}

‡AIR OPTIX® NIGHT & DAY® AQUA lenses are approved for daily wear and for up to 30 nights' continuous wear. Not everyone can wear lenses for a full 30 nights. Eye care practitioner must be consulted.

AIR OPTIX® AQUA



THE SCIENCE

Up to 5 times greater oxygen transmissibility than traditional soft contact lenses.²³ SmartShield™ Technology provides clean and consistently comfortable vision from day 1 to day 30.^{19, Δ}



THE BENEFIT

Ultra smooth lens surface designed to defend against daily deposits^{16,17} for comfortable wear all day long.^{19,24}



PERFECT FOR

Patients who seek a healthy, natural feeling and comfort all day, every day, and for the whole wearing period.^{15, Δ}

AIR OPTIX® for ASTIGMATISM



THE SCIENCE

Features a breakthrough Precision Balance 8|4™ design²¹ combined with a highly breathable silicone hydrogel material.²³



THE BENEFIT

Provides astigmatic patients with improved levels of comfort, visual acuity,^{19,**} and outstanding stability, resulting in 98% of these lenses having acceptable or optimal fit at dispensing.²¹



PERFECT FOR

Patients seeking a breathable^{23,**} monthly contact lens that delivers exceptional visual acuity and comfort all month long.^{19,**}

^ΔUp to one month replacement. ^{**}Based on AIR OPTIX® for ASTIGMATISM.

AIR OPTIX® AQUA MULTIFOCAL



THE SCIENCE

Precision Profile™ lens design for crisp, clear vision at all distances.¹⁴



THE BENEFIT

Bi-aspheric surface design enhances image quality and results in 98% fit success rate.⁸



PERFECT FOR

Presbyopic patients seeking a breathable²³ monthly contact lens that provides clear vision at all distances.¹⁴



	AIR OPTIX® plus HydraGlyde®	AIR OPTIX® plus HydraGlyde® for ASTIGMATISM	AIR OPTIX® plus HydraGlyde® MULTIFOCAL
Material	iotafilcon B	iotafilcon B	iotafilcon B
Water content (%)	33	33	33
Dk/t	138 @ -3.00D	108 @ -3.00D	138 @ -3.00D
TC (mm)	0.08	0.102	0.08
TD (mm)	14.2	14.5	14.2
BOZR (mm)	8.6	8.7	8.6
Cyl	–	-0.75, -1.25, -1.75, -2.25	–
Axes	–	10 to 180 (in 10° steps)	–
Power range (steps)	+0.50 to +6.00 (0.25D steps); +6.50 to +8.00 (0.50D steps); -0.50 to -8.00 (0.25D steps); -8.50 to -12.00 (0.50D steps)	+6.00 to -6.00 (0.25D); -6.50 to -10.00 (0.50D)	+6.00 to -10.00 (0.25DS)
Add (steps)	–	–	LO (<+1.25), MED (+1.50 to +2.00), HI (+2.25 and over)
Handling tint	Blue Visitint	Blue Visitint	Blue Visitint
Surface	SmartShield™ Technology	SmartShield™ Technology	SmartShield™ Technology
Replace frequency	1/12	1/12	1/12
Design	Front surface: Aspheric; Back surface: Aspheric	Back surface: Toric	Front surface: Aspheric; Back surface: Aspheric



AIR OPTIX® NIGHT & DAY® AQUA	AIR OPTIX® AQUA	AIR OPTIX® for ASTIGMATISM	AIR OPTIX® AQUA MULTIFOCAL
iotafilcon A	iotafilcon B	iotafilcon B	iotafilcon B
24	33	33	33
175 @ -3.00D	138 @ -3.00D	108 @ -3.00D	138 @ -3.00D
0.08	0.08	0.102	0.08
13.8	14.2	14.5	14.2
8.4 and 8.6	8.6	8.7	8.6
–	–	-0.75, -1.25, -1.75, -2.25	–
–	–	10 to 180 (in 10° steps)	–
+6.00 to -8.00 (0.25D); -8.50 to -10.00 (0.50 D)	+0.50 to +6.00 (0.25D steps); -0.50 to -6.00 (0.25D steps); -6.50 to -10.00 (0.50D steps)	+6.00 to -6.00 (0.25D); -6.50 to -10.00 (0.50D)	+6.00 to -10.00 (0.25DS)
–	–	–	LO (<+1.25), MED (+1.50 to +2.00), HI (+2.25 and over)
Yes	Yes	Yes	Yes
SmartShield™ Technology	SmartShield™ Technology	SmartShield™ Technology	SmartShield™ Technology
1/12	1/12	1/12	1/12
Front surface: Aspheric; Back surface: Aspheric	Front surface: Aspheric; Back surface: Aspheric	Back surface: Toric	Front surface: Aspheric; Back surface: Aspheric



AIR OPTIX® COLORS
breathable contact lenses*



Naturally beautiful hues that blend with the existing eye colour to create a range of looks – from subtle changes to bold enhancements – with or without vision correction.



AIR OPTIX® COLORS



THE SCIENCE

The first monthly colour contact lens with exceptional breathability.²⁵ 3-in-1 colour technology blends three colours into one for totally natural results. Outer ring to define the eye, primary colour to transform the eye colour and inner ring to brighten and add depth.



THE BENEFIT

Stunning and healthy white-looking²⁵ eyes with a natural appearance. 12 colours available; from subtle to vibrant, now including a new precious gemstone collection.



PERFECT FOR

Patients seeking to naturally enhance their eyes with comfortable lenses all month long.^{15,19,**}

SUBTLE COLOURS



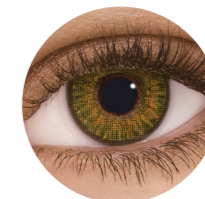
Grey



Blue



Green



Pure Hazel



Brown

PRECIOUS GEMSTONE COLLECTION NEW



Amethyst



True Sapphire



Turquoise

VIBRANT COLOURS



Sterling Grey



Brilliant Blue



Gemstone Green



Honey

FreshLook® COLORBLEND®

Monthly replacement contact lenses



FreshLook® COLORS™

Monthly replacement contact lenses



FreshLook® DIMENSIONS™

Monthly replacement contact lenses



THE SCIENCE

A blend of three colours into one contact lens.



THE BENEFIT

A beautiful blend of colour for a completely natural effect.



PERFECT FOR

Patients with or without a need for vision correction who want to change their eye colour regularly.

SUBTLE COLOURS



True Sapphire Grey Blue Green



Pure Hazel Brown Amethyst Turquoise

VIBRANT COLOURS



Sterling Grey Brilliant Blue



Gemstone Green Honey



THE SCIENCE

Iris pattern design to create a dramatic change.



THE BENEFIT

A bold look for dark eyes.



PERFECT FOR

Patients with or without a need for vision correction who want to change their eye colour regularly.



Blue Green



Hazel Violet



Misty Grey Sapphire Blue



THE SCIENCE

Charcoal starburst pattern.



THE BENEFIT

Adds depth and dimension to light eyes.



PERFECT FOR

Patients with or without a need for vision correction who want to change their eye colour regularly.



Caribbean Aqua



Pacific Blue



Sea Green

FreshLook® ONE-DAY®



THE SCIENCE

3-in-1 colour technology. Outer ring to define the eye, primary colour to transform the eye colour and inner ring to brighten and add depth.



THE BENEFIT

A naturally subtle yet complete eye colour change.



PERFECT FOR

Patients who seek to change their eye colour on a regular or occasional basis.



Pure Hazel



Blue



Grey



Green

DAILIES® FreshLook® Illuminate™



THE SCIENCE

Lens with PVA moisture release technology,¹² released from the natural blinking action for continuous lubrication throughout the day.¹⁰



THE BENEFIT

Provides greater depth and definition for the eye.



PERFECT FOR

Patients who want to enhance the appearance of their eyes regularly or occasionally.



Before



After



	AIR OPTIX® COLORS	FreshLook® COLORBLEND®	FreshLook® COLORS™
Material	iotrafilcon B	phemfilcon A	phemfilcon A
Water content (%)	33	55	55
Dk/t	138 @ -3.00D	20 @ -3.00D	20 @ -3.00D
TC (mm)	0.08	0.08	0.08
TD (mm)	14.2	14.5	14.5
BOZR (mm)	8.6	8.6	8.6
Power range (steps)	+6.00 to -6.00 (0.25D); -6.50 to -8.00 (0.50D)	+2.00 to -6.00 (0.25D); +2.50 to +6.00 (0.50D); -6.50 to -8.00 (0.50D)	+2.00 to -6.00 (0.25D); +2.50 to +6.00 (0.50D); -6.50 to -8.00 (0.50D)
Tint/opaque	Opaque	-	-
Lenses per box	2	2	2
Replace frequency	1/12	1/12	1/12
Design	Front surface: Aspheric; Back surface: Aspheric	Front surface: Spherical Lenticular; Back surface: Spherical	Front surface: Spherical Lenticular; Back surface: Spherical

	FreshLook® DIMENSIONS™	FreshLook® ONE-DAY®	DAILIES® FreshLook® Illuminate™
	phemfilcon A	nelfilcon A	nelfilcon A (with added PVA)
	55	69	69
	20 @ -3.00D	26 @ -3.00D	26 @ -3.00D
	0.08	0.10	0.10
	14.5	13.8	13.8
	8.6	8.6	8.6
	+2.00 to -6.00 (0.25D); +2.50 to +6.00 (0.50D); -6.50 to -8.00 (0.50D)	Plano to -6.00 (0.25D) (Excluding -0.25);	Plano to -6.00 (0.25D) (Excluding -0.25); -6.50 to -8.00 (0.50D)
	-	-	-
	2 or 6, 2 pack is in plano only	10	10
	1/12	1/7	1/7
	Front surface: Spherical Lenticular; Back surface: Spherical	Front surface: Tri-curve; Back surface: Tri-curve	Front surface: Tri-curve; Back surface: Tri-curve



OPTI-FREE[®]
PRODUCTS



Contact Lens Care

A range of highly effective lens care products that provide comfort, performance and convenience, whatever your patients' needs.





OPTI-FREE® pureMoist®



THE SCIENCE

This multi-purpose disinfecting solution contains HydraGlyde® Moisture Matrix technology. It also contains POLYQUAD® and ALDOX® which surpass ISO requirements for disinfection.^{26,27}



THE BENEFIT

Exceptional cleaning, disinfection and moisture for long lasting comfort.^{26,27,28,29}



PERFECT FOR

Reusable contact lens wearers that want to benefit from 16 hours of comfortable wearing time.^{28,29}



OPTI-FREE® RepleniSH®



THE SCIENCE

This multi-purpose disinfecting solution contains POLYQUAD® and ALDOX® to provide disinfection and TearGlyde® which reconditions the lens surface overnight.^{30,31,32,33}



THE BENEFIT

Long lasting moisture retention and comfortable wear.^{34,35}



PERFECT FOR

Silicone hydrogel lens wearers and also compatible with hydrogel lenses.



OPTI-FREE® Express®



THE SCIENCE

Uses a combination of Citrate and Tetric® 1304 to promote effective cleaning.³⁵ It also contains POLYQUAD® and ALDOX® which surpass ISO requirements for disinfection.^{35,36}



THE BENEFIT

Cleans, rinses, disinfects and helps retain moisture on the lens surface for up to 8 hours.^{35,36,37}



PERFECT FOR

A great, cost effective choice to keep contact lenses fresher and wetter for longer.³⁵



AOSEPT® PLUS with HydraGlyde®



THE SCIENCE

This gold standard in peroxide-based cleaners features HydraGlyde® Moisture Matrix technology. Its proprietary formula deeply cleans, loosens debris and deposits and enhances protein removal for triple action cleaning.^{34,38,39}



THE BENEFIT

Powerful disinfection efficacy and all day comfort.^{39,40}



PERFECT FOR

Patients looking for lens care products that offer exceptional and irritant free comfort.^{39,40}



	OPTI-FREE® pureMoist®	OPTI-FREE® RepleniSH®
Solution	Multi-purpose cleaning and disinfecting solution optimised for use with silicone hydrogel lenses	Multi-purpose cleaning and disinfecting solution developed for use with silicone hydrogel lenses but also compatible with hydrogel materials
Ingredients	POLYQUAD® 0.001%, ALDOX® 0.0006%, HydraGlyde®, Sodium Citrate, Tetric® 1304, Boric Acid	POLYQUAD® 0.001%, ALDOX® 0.0005%, Sodium Citrate, Sodium Borate, TearGlyde®; a dual action reconditioning system made up of Tetric® 1304 and Nonanoyl Ethylenediaminetriacetic Acid
Discard life	At expiry date or 6 months after opening	At expiry date or 6 months after opening
Pack sizes	Sample Pack: 60ml; Travel Pack: 90ml; Single Bottle: 300ml; Twin Pack: 2x300ml; 3 month Value Pack: 2x300ml + 90ml with 2x3 month AIR OPTIX® Packs; 6 month Value Pack: 4x300ml + 2x90ml with 4x3 month AIR OPTIX® Packs	Sample Pack: 60ml; Travel Pack: 90ml; Single Bottle: 300ml; Twin Pack: 2x300ml
Disinfection efficacy	Surpasses ISO standards for fungal and bacterial reduction. Gold standard biocompatible disinfection. Achieves standalone status with high disinfection ability. ALDOX® is highly effective against acanthamoeba. Patented formula to Alcon®. The POLYQUAD® and ALDOX® dual disinfectants act against harmful microorganisms including bacteria, fungi and acanthamoeba ^{26,36,41}	Achieves a high level of disinfection by killing bacteria ^{36,37}
Use	Suitable for all soft contact lenses	Suitable for all soft contact lenses



	OPTI-FREE® Express®	AOSEPT® PLUS with HydraGlyde®
Solution	Multi-purpose cleaning and disinfecting solution developed for use with hydrogel lenses and compatible with silicone hydrogel lenses	Preservative-free peroxide solution
Ingredients	POLYQUAD® 0.001%, ALDOX® 0.0005%, Tetric® 1304, Citrate, EDTA, Boric Acid, Sorbitol and Aminomethylpropanol	3% Hydrogen Peroxide, Phosphonic Acid (stabilizer), Sodium Chloride, Phosphate (buffer system), Poloxamer (surfactant), HydraGlyde® Moisture Matrix, (EOBO-21 – Polyoxyethylene-Polyoxybutylene), Coated Disc (AODISC)
Discard life	At expiry date or 6 months after opening	At expiry date or 3 months after opening
Pack sizes	Single Bottle: 355ml; Twin Pack: 2x355ml; 3 month Value Pack: 2x300ml + 90ml with 2x3 month AIR OPTIX® Packs; 6 month Value Pack: 4x300ml + 2x90ml with 4x3 month AIR OPTIX® Packs	Starter Kit: 90ml; Single Bottle: 360ml; Twin Pack: 2x360ml; Value Pack: 3x360ml + AIR OPTIX® contact lenses 3 month Value Pack: 3x360ml with 2x3 month AIR OPTIX® Packs 6 month Value Pack: 6x360ml with 4x3 month AIR OPTIX® Packs
Disinfection efficacy	Effective cleaning and disinfecting	Hydrogen Peroxide-based deep cleaning using built in surfactant poloxamer
Use	Suitable for all soft contact lenses	Suitable for use with soft and RGP lenses, ideal for silicone hydrogel lenses



Systane®

Family of Products

A range of tailored solutions that provide long lasting relief for evaporative and aqueous deficient dry eye patients.^{††}



^{††}Systane LID WIPES designed to complement the Systane® family of eye drops.



Systane® BALANCE



THE SCIENCE

Lipid-containing dry eye drop designed to restore the lipid tear component to enhance tear film stability and protect the ocular surface.⁴²



THE BENEFIT

Provides long lasting relief from evaporative dry eye symptom, which can be caused by Meibomian Gland Dysfunction (MGD), such as burning and irritation. Signs of MGD and patients' quality of life can be improved in just 4 weeks.⁴³ Helps to restore the lipid layer and can protect the surface of the eye.⁴² Once opened it can last up to 6 months. Can be used before and after, not whilst wearing contact lenses.



PERFECT FOR

Extended protection and fast symptom relief, leaving patients' eyes feeling comfortable.⁴²



Systane® ULTRA



THE SCIENCE

Helps restore the tear film and provide long lasting protection. The viscoelastic properties help prevent contact lens-related dry eye.^{42,44}



THE BENEFIT

Helps dry eye associated with aqueous and mucin layer deficiency. Contact lens friendly. Once opened it can last up to 6 months.^{42,44}



PERFECT FOR

Extended protection and fast symptom relief, leaving patients' eyes feeling comfortable.⁴²



Systane® GEL DROPS



THE SCIENCE

An intensive gel shield for extended protection and enduring relief. Allows the cornea to heal and provides protection from future damage.⁴⁶



THE BENEFIT

Helps dry eye associated with aqueous and mucin layer deficiency.⁴⁵ Designed to provide protection against the symptoms of moderate to severe dry eye. It offers the convenience of a drop with the protection of a gel. Once opened it can last up to 3 months. Can be used before and after, not whilst wearing contact lenses.



PERFECT FOR

Night-time use or extra daytime protection for long lasting relief.⁴⁵

Systane® LID WIPES



THE SCIENCE

Designed to complement the Systane® family of eye drops.



THE BENEFIT

Can be used before washing the face or during a daily cleansing routine to help remove debris and reduce eye irritation. Individually wrapped for easy transportation and to maintain sterility. They are also hypoallergenic and soothing for even the most sensitive eyes.



PERFECT FOR

Promoting good eye hygiene and eye health to your patients.



	Systane® BALANCE	Systane® ULTRA	Systane® GEL DROPS	Systane® LID WIPES
Pack size	Single bottle: 10ml Sample size: 3ml	Single bottle: 10ml Sample size: 3ml	Single bottle: 10ml Sample size: 3ml	30 individually wrapped sachets
Contact lens friendly	No	Yes	No	No
Discard life	6 months	6 months	3 months	For individual wipes – immediately after use



Fitting Guides & Power Grids



MULTIFOCAL

Multifocal Fitting Guidelines

To ensure the best visual performance at all distances

- 1 Please start with a new refraction aiming for the minimum ADD, to ensure best visual performance at all distances.

INITIAL LENS SELECTION

- Determine vertex-corrected, least minus/most PLUS, spherical equivalent distance Rx and add +0.25 binocularly.
- Determine initial ADD (LO, MED, HI) based on the chart to the right.

ADD SELECTION	
MINIMUM ADD	BOTH EYES
UP TO + 1.25	LO
+1.50 to +2.00	MED
+2.25 and over	HI



- 2 Allow for **10min** of real-world exposure (outside of the consulting room) before assessing visual performance.

DISTANCE OVER REFRACTION

- Perform binocular and monocular over-refraction.
- Check near vision quality with everyday objects.
- If not 0.00, move to the new trial lenses.
- Dispense trial lenses – wearer now needs to experience “real world” vision for approximately one to two weeks.

TIPS FOR OVER REFRACTION

- Always check vision under binocular conditions.
- Aim to assess the maximum PLUS accepted at distance.
- Do NOT use a phoropter – only hand held lenses.
- Do NOT change the ADD power.

TORIC

DAILIES® AquaComfort PLUS® Toric Fitting Guidelines

4 easy steps to a successful fit



1 SELECT INITIAL CONTACT LENS

Upon completion of the refraction, use the **Spectacle to Contact Lens Power Grid²** chart to select your initial trial contact lens power.

Contact Lens Axis:

- Select the axis for DAILIES® AquaComfort PLUS® TORIC contact lenses closest to the spectacle axis – 10°, 20°, 70°, 80°, 90°, 100°, 110°, 160°, 170°, 180°.
- Allow the contact lens to settle on the eye.

2 EVALUATE CONTACT LENS FIT

a) Assess centration:

A well-fitted contact lens will have full corneal coverage with good centration.

b) Assess contact lens movement:

A well-fitted contact lens will show sufficient movement to allow tear exchange under the contact lens during blinking, primary or upgaze.

c) Assess push-up test:

Using lower eyelid, push the contact lens upwards. A well-fitted contact lens is easy to displace, and returns smoothly to the centred position when released.

3 EVALUATE INITIAL CONTACT LENS ORIENTATION

Tips for viewing the scribe lines:

- a) Narrow the slit lamp beam.
- b) Confirm the light beam passes through the centre of the pupil. Scribe lines are located at 3 and 9 o'clock.
- c) Determine the amount of rotation, if any, and compensate accordingly.

NOTE: "OK" Inversion Indicator may orient either in the 6 or 12 o'clock position.

4 EVALUATE VISUAL ACUITY

Check visual acuity and perform a spherical over-refraction if necessary. If the spherical over-refraction does not yield acceptable vision, perform a spherocylindrical over-refraction.

Visit www.myalcon.co.uk for more details.

²Determination of final cylinder axis to order will be made after compensation for lens orientation.

TORIC

AIR OPTIX® for ASTIGMATISM Fitting Guidelines

4 easy steps to a successful fit



1 SELECT INITIAL TRIAL CONTACT LENS

Upon completion of the refraction, use the **Spectacle to Contact Lens Power Grid²** chart to select your initial trial lens power.

Lens Axis:

- Select the axis for AIR OPTIX® for ASTIGMATISM soft contact lenses closest to the spectacle axis. These contact lenses come in axes around the clock in 10 degree steps.
- Allow the contact lens to settle on the eye for 5 to 10 minutes.

2 EVALUATE CONTACT LENS FIT

a) Assess centration:

A well-fitted contact lens will have full corneal coverage with good centration in primary, up and side gaze.

b) Assess contact lens movement:

A well-fitted contact lens will show sufficient movement to allow tear exchange under the lens during blinking, primary or upgaze.

c) Assess push-up test:

Use the lower lid border to push the contact lens upwards. A well-fitted contact lens is easy to displace, and returns smoothly to the centred position when released.

3 EVALUATE VISUAL ACUITY

On rare occasions, the fitting might result in a reduced visual acuity.

a) First, do a spherical over refraction.

A well-fitted contact lens will have full corneal coverage with good centration in primary, up and side gaze.

b) Check for too much minus power first (plus over refraction) and then for too little minus (minus over refraction).

c) If adding plus or minus lenses improves acuity, use a new trial contact lens with the adjusted sphere power or dispense a pack with this power. If acceptable vision cannot be achieved, check for rotation and compensate accordingly when selecting the next trial contact lens.

4 EVALUATE INITIAL CONTACT LENS ORIENTATION

Tips for viewing the scribe lines:

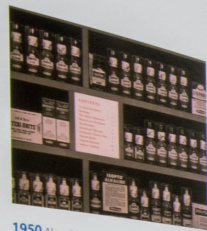
Narrow the slit lamp beam. Confirm the light beam passes through the centre of the pupil. Scribe lines are located in the area from the limbus to the pupil at 3, 6 and 9 o'clock (with the 6 o'clock being a bit wider than the other two). Determine the absolute amount of rotation, if any, and compensate accordingly using the LARS/CAAS card.

AIR OPTIX® for ASTIGMATISM contact lenses achieve rotational stability on eye in just 30 seconds.

²Determination of final cylinder axis to order will be made after compensation for lens orientation.



1945 Two pharmacists, Robert Alexander and William Conner, open a small pharmacy in Fort Worth, Texas, combining the first syllables of their last names to call it Alcon®.



1950 Alcon® introduces its first two ophthalmic products: Ophthalbin™ and Zincline™.



1947 With William Conner as its first president, Alcon® Laboratories, Inc. is incorporated. The company begins manufacturing specialty pharmaceutical products. Alexander and Conner fill prescriptions during the day, and at night, prepare sterile, injectable vitamins and oral products using a blender and pressure cooker.

1950



1953 While on a sales call in West Texas, Robert Alexander and a local physician develop and patent the DROP-TAINER® eye drop dispensing bottle, now standard for today's eye care products.

1960

1962 The Alcon® Trust is established, and continues today through the Alcon® Foundation which supports organizations that advance and improve the quality of eye health education and access to care globally.

1964 Alcon® establishes its charitable in-kind donation program: Medical Missions and U.S. Patient Assistance Programs. Through Medical Missions, Alcon® supports eye care professionals and organizations around the world in their work to bring eye care to people in need through philanthropic sight-saving missions. Alcon®'s Patient Assistance Programs help provide the gift of U.S. patients who cannot afford medications do not qualify for local, state or federal prescription programs.

1969 Alcon®'s surgical division formed with seven associates.



Alcon Tools, Education & Care

Practical and technical training resources for both qualified healthcare and eyecare professionals and students, designed to advance clinical education, support staff training and enable quality patient service.

Alcon's Online Tools

InContact

Alcon understands the importance of engaging patients through personalised digital services.

That's why we've developed InContact, a unique e-commerce service designed to connect optical businesses with new and existing contact lens wearers.

InContact encourages patient loyalty by enabling them to log in to www.wearlenses.co.uk or www.wearlenses.ie and repurchase their contact lenses or lens care products from their independent optician.

BENEFITS

- Opticians can use InContact to register their patients, receive orders and add contact lens check reminders.
- 'Buy now' functionality enables patients to order online 24/7.
- Allows set up of automatic repurchase reminders, simplifying the reordering process for both patients and opticians.
- Gives patients access to professional advice, a store locator to find their local optician and discounts off their first 3 month purchase.



Easy Online



Alcon understands that making product ordering quick and easy allows opticians to spend more time helping their patients.

That's why Alcon's online ordering system is ready and available 24 hours a day, 7 days a week, through www.uk.easy-myalcon.com

BENEFITS

- Order our full range of products anytime.
- Manage patient details and records.
- Easy returns process.



Alcon's Training Services

Alcon is committed to providing innovative, educational resources designed to advance clinical education, support staff training, and enable high quality patient service. The Alcon® Academy is a dedicated training facility for Optometrists, Contact Lens Opticians, Ophthalmologists and their teams.

The Alcon Academy is equipped with the latest technology, and offers more space than the average consulting room and operating theatre. This allows enhanced opportunities for interactive and experiential based learning. We encourage peer to peer learning and coaching, and endeavour to ensure an educationally productive ratio of delegates to equipment and facilitators.



Alcon® Academy for Eyecare Excellence™

The Academy for Eyecare Excellence™ is the guarantee with which we deliver professional education and development. It is our promise that the high quality of our materials will be constant across the different mediums through which we share insight and learning. We are proud to be able to offer education via articles, newsletters, online, at our Academy, at conferences and through training delivered to you and your teams within your own practice.

Our courses and programmes are often created by, or in partnership, with experts in that area of focus/understanding. This is done to ensure that you receive the most contemporary and relevant training in that area. We also commit to undertake regular reviews of our materials and content to maintain the high standards we set for ourselves, and you expect of us.

To find out more about Alcon's products, services and educational programmes email alcon.professionaffairs@alcon.com



TECHNICAL EDUCATION

Access technical information, downloadable fitting guides, and fact sheets to help answer some of the questions you may have about contact lenses and solutions.

EDUCATION

Access a range of resources to support the building and maintaining of a practice. Train staff, and ensure quality patient service to help enhance the patient's experience.

STUDENT EDUCATION

Access practical support including insights into career pathways, top tips for students and an interactive element where students can present clinical or business questions to The Alcon® Academy.





References



References

- Σ Coming late 2018.
 - Most breathable branded daily disposable lens Dk/t =156 @ -3.00D.
 - † In vitro measurement of unworn lenses.
 - * Based on AIR OPTIX® AQUA.
 - ** Based on AIR OPTIX® for ASTIGMATISM.
 - *** Based on AIR OPTIX® AQUA MULTIFOCAL.
 - ‡ AIR OPTIX® NIGHT & DAY® AQUA lenses are approved for daily wear and for up to 30 nights' continuous wear. Not everyone can wear lenses for a full 30 nights. Eye care practitioner must be consulted.
 - Δ Up to one month replacement.
 - ⌘ Systane® LID WIPES designed to complement the Systane® family of eye drops.
 - ≠ Determination of final cylinder axis to order will be made after compensation for lens orientation.
1. Maissa C, et al. Evaluation of the Lubricity of DAILIES TOTAL1® contact lenses after wear. Opt Vis Sci Annual meeting 2014.
 2. Based on the ratio of lens oxygen transmissibilities, among daily disposable lenses; Alcon data on file 2010.
 3. Thekveli S, Qui Y, Kapoor Y, et al. Structure-property relationship of delefilcon A lenses. Cont Lens Anterior Eye. 2012;35(Supp1):e14.
 4. Angelini T, Nixon R, Dunn A, et al. Viscoelasticity and mesh-size at the surface of hydrogels characterized with microrheology. ARVO 2013. E-abstract 114872.
 5. Perez-Gomez I, Giles T. European survey of contact lens wearers and eye care professionals on satisfaction.
 6. Akerman et al., Patient and ECP satisfaction with a novel Water Gradient daily disposable multifocal contact lens, 2nd World Congress of Optometry; Hyderabad, India; 11–13 September, 2017.
 7. Pitt et al. Loading and Release of a Phospholipid From Contact Lenses. Optom Vis Sci. 88 (4).2011.Alcon data on file, 2016.
 8. Bauman E, Lemp J, Kern J. Material Effect on Multifocal Contact Lens Fitting of Lenses of the Same Optical Design with the Same Fitting Guide. BCLA poster abstract, June 2017.
 9. Wolffsohn JS, Hunt OA, Chowdhury A. Objective clinical performance of 'comfort-enhanced' daily disposable soft contact lenses. Contact Lens Anterior Eye. 2010;33(2):88-92.2.
 10. Winterton L, Lally J, Sentell K, Chapoy L. The evolution of poly (vinyl alcohol) from a contact lens: The realization of a time release moisturizing agent/artificial tear. J Biomed Mater Res B Appl Biomater. 2007;80B:424-432.
 11. White CJ, Thomas CR, Byrne ME., Bringing comfort to the masses: a novel evaluation of comfort agent solution properties. Cont Lens Anterior Eye. 2014 Apr;37(2):81-91
 12. Pruitt, Triple-action moisturisers for increased comfort in daily disposable lenses, Optician 2007; 16.11: 27-28.
 13. In a subject masked clinical trial (n=93); Alcon data on file, 2010.
 14. Alcon data on file, 2013.
 15. Davis R, Eiden B. Changes in comfort and vision during weeks 3 and 4 monthly replacement silicone hydrogel contact lenses. American Academy of Optometry 2012; E-abstract 125401.

16. Nash W, Gabriel M, Mowrey-McKee M. A comparison of various silicone hydrogel lenses; lipid and protein deposition as a result of daily wear. *Optom Vis Sci*. 2010;87:E-abstract 105110.
17. Tighe BJ. A decade of silicone hydrogel development: surface properties, mechanical properties and ocular compatibility. *Eye & Contact Lens*. 2013;39:4-12.
18. In vitro study over 16 hours to measure wetting substantivity, Alcon data on file, 2015.
19. Eiden SB, Davis R, Bergenske P. Prospective study of lotrafilcon B lenses comparing 2 versus 4 weeks of wear for objective and subjective measures of health, comfort and vision. *Eye & Contact Lens*. 2013;39(4):290-294. *Optom Vis Sci* 2006;83:E-abstract 065263.
20. Based on a clinical study of 75 habitual AIR OPTIX® AQUA wearers who wore AIR OPTIX® plus HydraGlyde® for 30 days; Alcon Data on file, 2017.
21. In a randomised, subject-masked, multisite clinical with over 150 px; significance demonstrated at the 0.05 level; Alcon data on file, 2005.
22. Janakiraman D P, Brobst A, Wang C. Performance Comparisons of a Silicone Hydrogel to Low DK Toric Soft Contact Lenses. *Optom Vis Sci* 2006;83:E-abstract 065263.
23. Versus any available soft contact lens based on the ratio of lens oxygen transmissibilities; Alcon data on file, 2009, 2010.
24. Performance of Lotrafilcon B Silicone Hydrogel Contact Lenses in Experienced Low-Dk/t Daily Lens Wearers, Dillehay S, Miller M, *Eye & Contact Lens* 2007, Vol 33(6).
25. Cobalt Thickness Profiles and Dk/t Competitive Analysis, Alcon Data on File 2013.
26. Third party industry reports 2005-2009 and Alcon data on file, 2012.

27. Rosenthal R, Sutton S, Schlech B. Review of standards for evaluating the effectiveness of contact lens disinfectants. *PDA J Pharm Sci And Tech*. 2002;56(1):37-50.
28. Lally J, Ketelson H, Borazjani R, et al. A new lens care solution provides moisture and comfort with today's CLs. *Optician* 4/1/2011, Vol 241 Issue 6296, 42-46.
29. Campbell R, Kame G, et al. Clinical benefits of a new multi-purpose disinfecting solution in silicone hydrogel and soft contact lens users. *Eye & Contact Lens* 2012;38(2);93-101.
30. Epstein A. Understanding and Managing Risk in Contact Lens Wear. *Contact Lens Spectrum*, March 2009.
31. Corbin GS. A multicenter investigation of OPTI-FREE Replenish multi-purpose disinfecting solution impact on soft contact lens patient comfort. *Clinical Ophthalmology* December 2010;4; 47-57.
32. Santos L. Lens material and formulation of multipurpose solutions affects contact lens disinfection. *Contact Lens & Anterior Eye* 34 (2011); 179-182.
33. Meadows D. et al. Clinical Ex Vivo Wettability of Traditional and Silicone Hydrogel Soft Contact Lenses. Poster presented at BCLA; May 2006; Birmingham, UK.
34. Lally J, Ketelson H, Borazjani R, et al. A new lens care solution provides moisture and comfort with today's CLs. *Optician*. 2011;241(6296):42-46.
35. Stiegemeier MJ et al. Clinical performance of 'no rub' multi-purpose solutions. *Contact Lens & Anterior Eye* 2004;27:65-74.
36. Rosenthal RA, et al. Antimicrobial spectrum of a new contact lens disinfectant. Poster presented during the annual meeting of the American Academy of Optometry, San Diego, Calif. December 2005.

37. Dantos L. Lens material and formulation of multipurpose solutions affects contact lens disinfection. *Contact Lens & Anterior Eye* 34 (2011); 179-182.
38. Davis J, Ketelson H.A, Shows A, Meadows D.L. A lens care solution designed for wetting silicone hydrogel materials. Poster presented at: ARVO; May 2010; Fort Lauderdale, FL.
39. Alcon data on file, 2014.
40. Alcon data on file, 2014.
41. Borazjani RN, McAnally C, et al. Antibacterial, Antifungal and Antiamoebal Properties of a Novel Multi-Purpose Solution. *Investigative Ophthalmology & Visual Science* April 2010. Vol 51, 3414.
42. Benelli U. Systane® lubricant eye drops in the management of ocular dryness. *Clinical Ophthalmology*, Dove Press 2011.
43. Sindt CW & Foulkes GN. Efficacy of an artificial tear emulsion in patients with dry eye associated.
44. Systane Ultra 10ml UK Pilot Pack and Insert; 2016; 1: 2.
45. Systane Gel 10ml UK Pilot Pack and Insert; 2016; 1: 2.
46. Cohen S, Martin A, Sall K. Evaluation of clinical outcomes in patients with dry eye disease using lubricant eye drops containing polyethylene glycol or carboxymethylcellulose. *Clin Ophthalmol.* 2014;8:157-164.

Alcon A Novartis
Division

DAILIES TOTAL1, Focus, DAILIES, DAILIES AquaComfort PLUS, AIR OPTIX, AIR OPTIX plus HydraGlyde, AIR OPTIX COLORS, NIGHT & DAY, FreshLook, ONE-DAY, COLORBLENDS, DIMENSIONS, OPTI-FREE, AOSEPT, pureMoist, RepleniSH, Express, POLYQUAD, ALDOX, TearGlyde, Tetric, HydraGlyde, Systane, the DAILIES logo, DAILIES TOTAL1 logo, Focus DAILIES All Day Comfort logo, AIR OPTIX COLORS logo, AIR OPTIX AQUA logo, AIR OPTIX AQUA NIGHT & DAY logo, FreshLook logo, FreshLook COLORBLENDS logo, FreshLook COLORS logo, FreshLook DIMENSIONS logo, FreshLook ONE-DAY logo, FreshLook Illuminate logo, OPTI-FREE pureMoist logo, OPTI-FREE RepleniSH logo, OPTI-FREE Express logo, AOSEPT PLUS logo, Systane logo, Alcon and the Alcon logo are trademarks of Novartis AG. © 2018 Novartis AG. GB/VC/VCG/03/18/0045